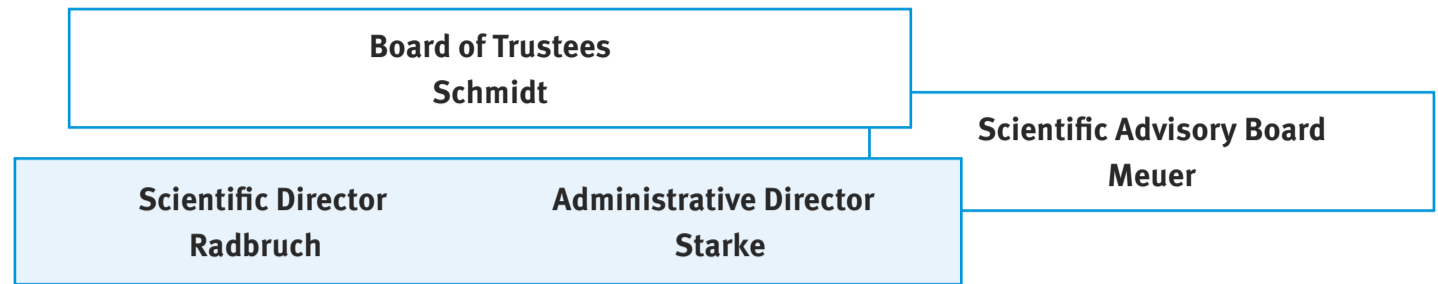


- Job Safety
- Biological safety
- Equal opportunities
- Inclusion
- Ombudsperson
- Animal Welfare
- Data Security



Pathophysiology of Rheumatic Inflammation Head: Radbruch

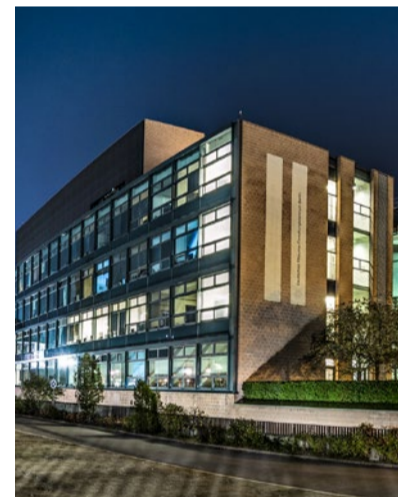
Signal Transduction Baumgrass	Glucocorticoids and Bioenergetics Buttgereit (1a)	Schwiete Lab for Microbiota and Inflammation Chang (3)	Developmental and Mucosal Immunology Diefenbach (1d)	B Cell Memory Dörner (1a)
Immunodynamics Hauser (1a)	Inflammatory Mechanisms Hegazy (1b)	Autoimmunology Alexander/Hiepe (1a)	Chronic Inflammatory Diseases of Childhood and Adolescence Kallinich (1f)	Chronic Inflammation Kruglov
Humoral Immune Regulation Kubagawa	Lymphocyte Development Melchers	Biophysical Analytics Niesner (2)	Immuno-Epigenetics Polansky (1e)	Cell Biology Radbruch
Innate Immunity Romagnani (1b)	TheRAdiagnostics Skriner (1a) in preparation	Systems Biology of Inflammation Thurley	Macrophages in Chronic Inflammation Triantafyllopoulou (1a)	Allergology Worm (1c)

Regenerative Rheumatology Head: (acting) Radbruch

Therapeutic Gene Regulation Mashreghi	Pitzer Lab of Osteoarthritis Research Löhning (1a)
--	---

Epidemiology and Health Services Research Head: (acting) Radbruch

Pediatric Rheumatology and Health Services Research Minden (1f)	Pharmacoepidemiology Strangfeld
Health Services Research Albrecht (acting)	Spondyloarthritides Podubnyy (1b)



Technology Platforms, Shared Resource Labs and Support Services

Flow Cytometry & Cell Sorting (FCCF) Chang, Kaiser	Mass Cytometry (MCCF) Mei, Grützkau	Central Laboratory for Microscopy Hauser, Niesner	Immune Monitoring Grützkau	Regine-von-Ramin Lab Molecular Rheumatology Grützkau, Häupl, Mashreghi
Animal Facility and Embryotransfer Reiske	Central Laboratory Lehmann	Support Services Administration, Scientific Coordination, IT-Service, Public Relations, Lab Kitchen, Library, Reception, Store		

Liaison-Cooperation Partners

<p>(1) Charité–Universitätsmedizin Berlin</p> <ul style="list-style-type: none"> (a) Rheumatology and Clinical Immunology, Burmester (b) Gastroenterology, Infectiology and Rheumatology, Siegmund (c) Dermatology, Venerology and Allergology, Ghoeschi (d) Institute of Microbiology, Infectious Diseases and Immunology, Diefenbach 	<ul style="list-style-type: none"> (e) Berlin-Brandenburg Center for Regenerative Therapies, BCRT, Volk (f) Pediatrics, Pneumology and Immunology with intensive Medicine, Mall <p>(2) Freie Universität Berlin, Faculty of Veterinary Medicine</p> <p>(3) Technische Universität Berlin, Fachbereich Biotechnologie</p>
---	--